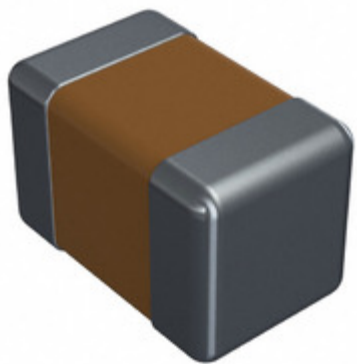


CDR31BP301BFZPAT



Part Number: [CDR31BP301BFZPAT](#)
Manufacturer: [Electro-Films \(EFI\) / Vishay](#)
Description: CAP CER 300PF 100V 1% BP 0805
Data sheet: [PDF CDR Series \(MIL-PRF-55681\)](#)

RoHS Status: Contains lead / RoHS non-compliant
Ship From: Hong Kong
Shipment Way: DHL/Fedex/TNT/UPS/EMS

Images are for reference only.
 See Product Specifications for product details.
 Buy CDR31BP301BFZPAT with confidence from
 Component-World.HK, 1 Year Warranty

[Request For Quotation](#)

PRODUCT PARAMETER

Part Number	CDR31BP301BFZPAT	Manufacturer	Electro-Films (EFI) / Vishay
Description	CAP CER 300PF 100V 1% BP 0805	Lead Free Status / RoHS Status	Contains lead / RoHS non-compliant
Quantity Available	65301 pcs	Data sheet	CDR Series (MIL-PRF-55681)
Category	Capacitors	Voltage - Rated	100V
Tolerance	±1%	Thickness (Max)	0.051" (1.30mm)
Temperature Coefficient	BP	Size / Dimension	0.079" L x 0.049" W (2.00mm x 1.25mm)
Series	Military, MIL-PRF-55681, CDR31	Ratings	-
Packaging	Tape & Reel (TR)	Package / Case	0805 (2012 Metric)
Other Names	CDR31BP301BFZPAT-MIL	Operating Temperature	-55°C ~ 125°C
Mounting Type	Surface Mount, MLCC	Moisture Sensitivity Level (MSL)	1 (Unlimited)
Manufacturer Standard Lead Time	32 Weeks	Lead Style	-
Lead Spacing	-	Lead Free Status / RoHS Status	Contains lead / RoHS non-compliant
Height - Seated (Max)	-	Features	-
Failure Rate	P (0.1%)	Detailed Description	300pF ±1% 100V Ceramic Capacitor BP 0805 (2012 Metric)
Capacitance	300pF	Applications	General Purpose

Component-World.com is a Reliable Stocking Distributor of Electronic Components. We specialize in all Electro-Films (EFI) / Vishay series electronic components. We have 65301 pieces of Electro-Films (EFI) / Vishay CDR31BP301BFZPAT in stock available now. Request a quote from electronics components distributor at Component-World.com, our sales team will contact you within 24 hours.
 RFQ Email: info@Components-World.com

RELATED PRODUCTS

	Part#: CDR31BP301BJWSAJ Description: CAP CER 300PF 100V BP 0805	Manufacturers: Electro-Films (EFI) / Vishay	RFQ
	Part#: CDR31BP301BJWSAR Description: CAP CER 300PF 100V BP 0805	Manufacturers: Electro-Films (EFI) / Vishay	RFQ
	Part#: CDR31BP301BFUSAB Description: CAP CER 300PF 100V BP 0805	Manufacturers: Electro-Films (EFI) / Vishay	RFQ
	Part#: CDR31BP301BJWSAT Description: CAP CER 300PF 100V BP 0805	Manufacturers: Electro-Films (EFI) / Vishay	RFQ
	Part#: CDR31BP301BFZSAT Description: CAP CER 300PF 100V 1% BP 0805	Manufacturers: Electro-Films (EFI) / Vishay	RFQ
	Part#: CDR31BP301BFWSAJ Description: CAP CER 300PF 100V BP 0805	Manufacturers: Electro-Films (EFI) / Vishay	RFQ
	Part#: CDR31BP301BFZMAT Description: CAP CER 300PF 100V 1% BP 0805	Manufacturers: Electro-Films (EFI) / Vishay	RFQ
	Part#: CDR31BP301BFWSAT Description: CAP CER 300PF 100V BP 0805	Manufacturers: Electro-Films (EFI) / Vishay	RFQ
	Part#: CDR31BP300BKZSAT Description: CAP CER 30PF 100V 10% BP 0805	Manufacturers: Electro-Films (EFI) / Vishay	RFQ
	Part#: CDR31BP301BJZMAT Description: CAP CER 300PF 100V 5% BP 0805	Manufacturers: Electro-Films (EFI) / Vishay	RFQ
	Part#: CDR31BP301BFWSAB Description: CAP CER 300PF 100V BP 0805	Manufacturers: Electro-Films (EFI) / Vishay	RFQ
	Part#: CDR31BP301BJMSAJ Description: CAP CER 300PF 100V BP 0805	Manufacturers: Electro-Films (EFI) / Vishay	RFQ
	Part#: CDR31BP300BKZPAT Description: CAP CER 30PF 100V 10% BP 0805	Manufacturers: Electro-Films (EFI) / Vishay	RFQ
	Part#: CDR31BP301BJUSAB Description: CAP CER 300PF 100V BP 0805	Manufacturers: Electro-Films (EFI) / Vishay	RFQ
	Part#: CDR31BP301BJWSAB Description: CAP CER 300PF 100V BP 0805	Manufacturers: Electro-Films (EFI) / Vishay	RFQ
	Part#: CDR31BP300BKZPAT Description: CAP CER 30PF 100V 10% BP 0805	Manufacturers: Electro-Films (EFI) / Vishay	RFQ
	Part#: CDR31BP301BJZPAT Description: CAP CER 300PF 100V 5% BP 0805	Manufacturers: Electro-Films (EFI) / Vishay	RFQ
	Part#: CDR31BP301BFZPAT Description: CAP CER 300PF 100V 1% BP 0805	Manufacturers: Electro-Films (EFI) / Vishay	RFQ
	Part#: CDR31BP301BFWSAR Description: CAP CER 300PF 100V BP 0805	Manufacturers: Electro-Films (EFI) / Vishay	RFQ
	Part#: CDR31BP300BKZSAC Description: CAP CER 30PF 100V BP 0805	Manufacturers: Electro-Films (EFI) / Vishay	RFQ

Related keywords for CDR31BP301BFZPAT

Electro-Films (EFI) / Vishay CDR31BP301BFZPAT	CDR31BP301BFZPAT distributor	CDR31BP301BFZPAT supplier	CDR31BP301BFZPAT price
CDR31BP301BFZPAT download datasheet	CDR31BP301BFZPAT datasheet	CDR31BP301BFZPAT stock	buy CDR31BP301BFZPAT
Electro-Films (EFI) / Vishay CDR31BP301BFZPAT	Electro-Films (EFI) / Vishay CDR31BP301BFZPAT	Vishay Electro-Films CDR31BP301BFZPAT	Phoenix Passive Components / Vishay CDR31BP301BFZPAT